



I'm sure you are aware that we have had 2 positive cases of COVID which have led to 2 classes being sent home. I would like to take this opportunity to thank both sets of parents of these children. Both sets of parents followed the protocol as set out by PHA and both showed huge consideration for other children, their families and staff and their families. It goes without saying that I would really appreciate your ongoing support and consideration. Please do continue to err on the side of caution so that we can reduce the disruption to the children's education as much as possible.

I would also ask all parents to be aware that, when you post messages on parent WhatsApp groups what you post will most likely be read by a 'wee' family who are very concerned about their child (who has tested positive), about themselves and about their wider family circle (which might include elderly grandparents or other vulnerable children/adults). We are all in this together.

The rate of community transmission still appears to be alarmingly high and I would ask for your continued support in the playground. Please follow the one-way system, maintain social distance & wear a mask. In addition, please leave the playground as promptly as you can and don't allow your children to play with or climb on any equipment.

Positive COVID Test Result

Should your child test positive during school hours, please inform Mrs Lowry by email elowry738@c2kni.net **and** by phone 02893353280. Should your child test positive for COVID outside of school hours please contact me on 07359015420.

Close Contacts of a Positive COVID Case

The Public Health Agency have produced the flowchart below as guidance, should your child be identified as a close contact in school (there has been a positive case in your child's class bubble). Please keep this flowchart safe as you may need to refer to it throughout the year. If your child has been identified as a close contact and has undertaken a PCR test please **SEND A COPY OF THE NEGATIVE RESULT TO YOUR CHILD'S TEACHER VIA SEESAW AND TO MRS LOWRY BY EMAIL elowry738@c2kni.net before your child returns to school.**

SCHOOL IS OPEN AS NORMAL ON MONDAY 30 AUGUST.

ON MONDAY 30 AUGUST ALL CHILDREN SHOULD BRING A PACKED LUNCH AS NO CANTEEN DINNERS WILL BE AVAILABLE ON THIS DAY. Breakfast Club (7.45 – 8.45am) and canteen dinners will start on Tuesday 31 August.

From Monday 30 August onwards all pupils should arrive to school between 8.45 & 9.00am and they will finish at the times set out below, which are based on our new normal but are slightly staggered.

Year 1	Follow your induction programme until Friday 17 September. From Monday 20 September Y1 will finish school at 1.45pm (Monday-Friday)			
Year 2	Monday-Friday	1.50 pm		
Year 3	Monday & Tuesday	2.35 pm	Wednesday-Friday	1.45 pm
Year 4 & 5	Monday, Tuesday, Thursday & Friday	2.45 pm	Wednesday	1.50 pm
Year 6 & 7	Monday, Tuesday, Thursday & Friday	2.50 pm	Wednesday	1.55 pm

Seesaw

All children will have received their QR codes for Seesaw. I would encourage you to activate your child's Seesaw as a matter of urgency, as this will be your primary means of communication with your child's teacher.

Holiday List

I had sent out a copy of the holiday list at the end of June however there was a typing error on it which has now been amended and is attached below.

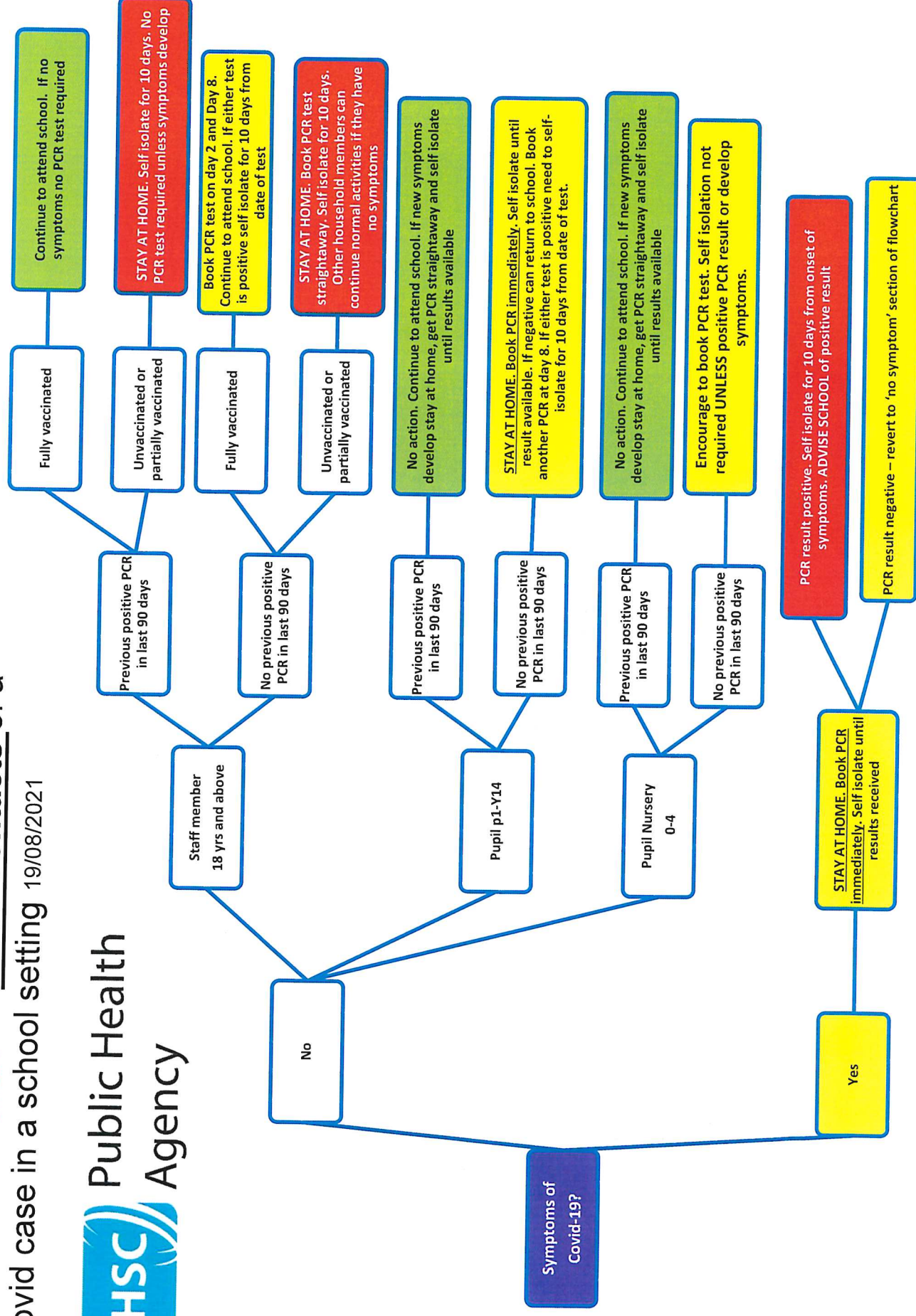
Free School Meals

If you feel you are entitled to free school meals and have not already done so, please apply online using the link below.
<https://www.eani.org.uk/financial-help/free-school-meals-uniform-grants>

PLEASE REMEMBER THAT WE CANNOT PROVIDE YOUR CHILD WITH FREE MEALS UNLESS WE HAVE HAD CONFIRMATION OF THEIR ENTITLEMENT FROM THE EDUCATION AUTHORITY. MEALS WILL NEED TO BE PAID FOR VIA THE SCHOOL MONEY SYSTEM UNTIL CONFIRMATION IS RECEIVED.

Although your child might never take up their right to free school meals because they prefer a packed lunch, it is very important for our school budget that every child who is entitled to free school meals has applied regardless of whether they take up the meal or not.

Guidance Flowchart for Close Contacts of a Covid case in a school setting 19/08/2021





Whitehead
Primary School
& Nursery Unit

'LEARNING AND GROWING TOGETHER'

HOLIDAY CALENDAR 2021-22

The holiday calendar has been agreed by the Board of Governors, approved by the Education Authority and is now the confirmed holiday list for 2021-22.

SCHOOL BEGINS	SCHOOL CLOSES	HOLIDAY (dates are inclusive)
Wednesday, 25 August 2021	Thursday, 23 September 2021	School Development Day Friday, 24 September 2021 (1 staff training day)
Monday, 27 September 2021	Friday, 22 October 2021	Halloween Half Term Monday, 25 October - Friday, 29 October 2021 (4 days + 1 staff training day)
Monday, 1 November 2021	Tuesday, 21 December 2021 No school dinners	Christmas Wednesday, 22 December 2021 – Tuesday, 4 January 2022 (10 days)
Wednesday, 5 January 2022	Friday, 11 February 2022	Winter Half Term Monday, 14 February – Friday, 18 February 2022 (4 days + 1 staff training day)
Monday, 21 February 2022	Friday, 8 April 2022 No school dinners	Easter Monday, 11 April – Friday, 22 April 2022 (10 days)
Monday, 25 April 2022	Thursday, 28 April 2022	May Day Friday, 29 April - Monday, 2 May (1 day & 1 staff training day)
Tuesday, 3 May 2022	Friday, 27 May 2022	Spring Bank Holiday Monday, 30 May – Friday, 3 June 2022 (4 days + 1 staff training day)
Monday, 6 June 2022	Thursday, 30 June 2022 No school dinners	Summer Holiday 2022